



i-net
Clear Reports
2017

Getting Started

i-net Designer

1 Introduction to i-net Designer	2
2 Obtaining and installing i-net Designer	3
2.1 Where to find i-net Clear Reports and i-net Designer	3
2.2 System Requirements	3
2.3 Installing i-net Designer	3
3 First Configuration of i-net Designer	5
4 Your First Report	6
4.1 Without a database connection	6
4.1.1 Inserting a Text Object into the report	7
4.1.2 Inserting a field into the report	8
4.1.3 Creating a formula	9
4.2 With database connection	11
5 FAQ and Troubleshooting	17
5.1 How do I specify the JDBC driver I am using to connect to my database?	17
5.2 I am getting the error "Configuration was not found", what am I doing wrong?	17
5.3 I set the license key for i-net Clear Reports, but it is still saying no license key could be found. What is the problem?	18
5.4 I used to automatically change the crystalclear.properties files for my various installations, now what do I do to automatically change my i-net Clear Reports configurations?	18
5.5 I have another question not answered within this guide, where can I find answers?	19
6 Further Resources	20

1 Introduction to i-net Designer

i-net Designer is a tool for creating custom reports based on your enterprise data. These reports can then be run using the report engine i-net Clear Reports. Just like i-net Clear Reports, i-net Designer is completely written in the Java language, enabling you to design your reports on any platform – not only Windows!

i-net Designer is a part of i-net Clear Reports or i-net Clear Reports Plus.

2 Obtaining and installing i-net Designer

2.1 Where to find i-net Clear Reports and i-net Designer

If you do not already have i-net Clear Reports, you can download it from: [our web site](#).

Simply click on "i-net Clear Reports", fill out the form on the next page and you will download your own version of i-net Clear Reports. All i-net Clear Reports versions come packaged with i-net Designer at no extra cost.

2.2 System Requirements

The only system requirement i-net Designer has is that your computer must have Java VM version Java SE 7 (or higher) installed. To download Java, please visit the [Java SE Downloads web site](#).

2.3 Installing i-net Designer

If you want to use i-net Designer, you can install it using the i-net Clear Reports setup tool.

During setup choose "Designer" to install it as standalone application. All included database (JDBC) drivers and Java Beans will be installed in this case. After this, simply set the path of where you want i-net Designer to be installed (e.g. C:\i-net Clear Reports), and the setup program will install the i-net Designer in the specified path.

Congratulations – you have now installed i-net Designer! The specified installation folder contains the batch file

"startDesigner.bat" (on Linux "startDesigner.sh") – running this file will start i-net Designer.

3 First Configuration of i-net Designer

The first time you start i-net Designer, you should first configure your data source configurations that you will use in your reports. To do this, select the menu item "Options | Data Source Manager". This opens the Data Source Manager dialog in that you can create and/or modify the data sources.

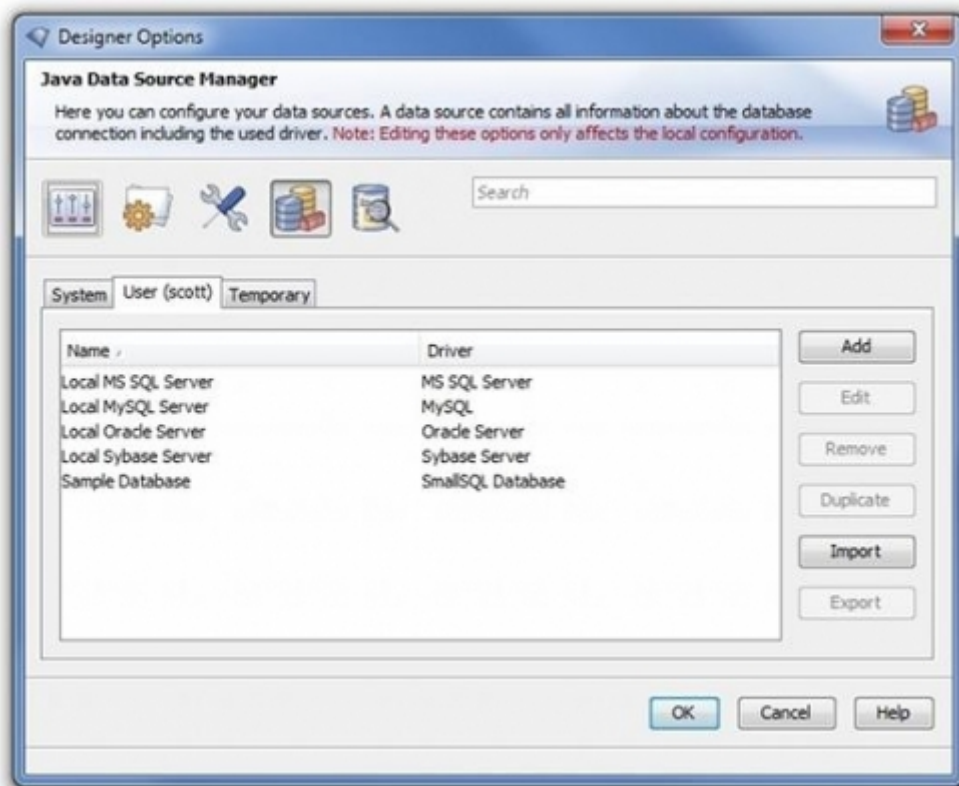


Figure 1: Data Source Manager

If you like to add a JDBC driver that you have not selected during setup, just copy the .jar file of the driver in the "lib/driver" directory which is included in the i-net Designer installation directory.

You are now ready to create your very first report with i-net Designer!


4 Your First Report

4.1 Without a database connection

Usually, most reports will have a database connection, since reporting is almost always about displaying database data in an ordered fashion. However, to make things simple, we'll start off with a very simple report with no database connection.

You can insert the following report fields and elements into a report without a database connection:

- Text Object
- Special Fields
- Parameter Field
- Formula Field
- Sub-report
- Line / Box
- Picture
- Section
- Java Bean

To create a new report you need to click on the New button  in the toolbar, or on the menu item "File | New...". You will see the Report Wizard (see following image [2](#)).

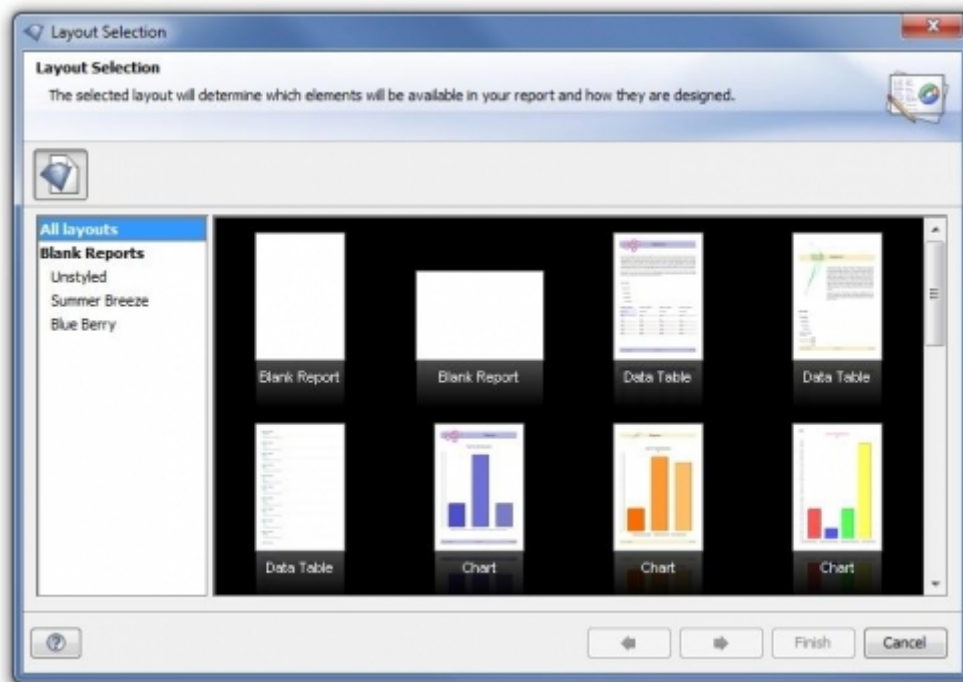



Figure 2: Report Wizard

To create a new report without a database connection, select "Blank Report" and simply click "Finish". Then you will see a new empty report window.

4.1.1 Inserting a Text Object into the report

- Either click on the menu item "Insert | Text Object", or click the Text Object toolbar button .
- Move the mouse cursor over the report window to the position where you would like to insert the text object. The mouse cursor will change in shape if it is moved over the report window.
- Drag a rectangle in the report window.

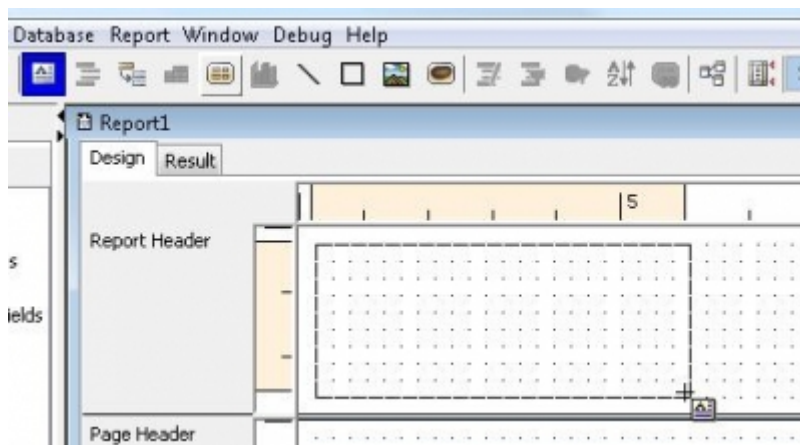


Figure 3: Insert Text Object

- Now you can enter the text for this text object.

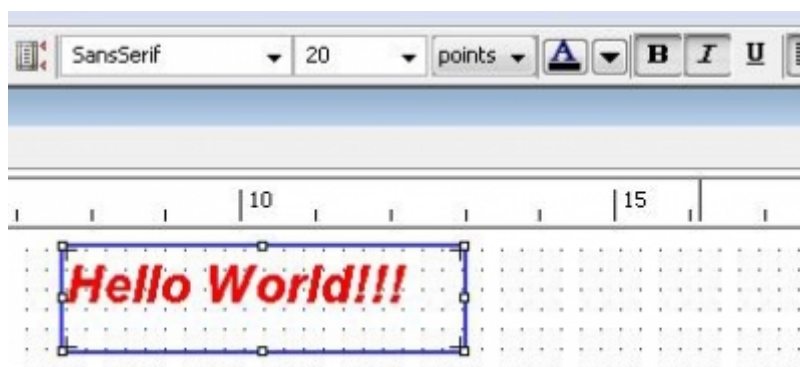


Figure 4: Enter Text

You can format the text with the format toolbar or with the "Property Editor". To start the "Property Editor", just right click on the text object and choose the menu item "Properties".

4.1.2 Inserting a field into the report

The Field Browser of an empty report contains only Special Fields. To add the special field "Print Time" to your report you need to:

- Expand the nodes "Special Fields" and "Document Properties" in the Field Browser.

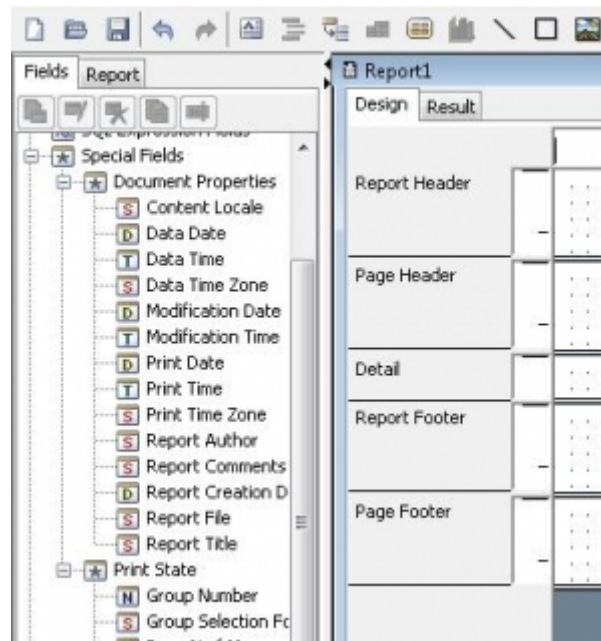




Figure 5: Insert Special Field

- Select the field "Print Time" and drag it into the report to the position where you want to insert it.
- Click on the "Result" tab of the report window to see the result in the report viewer. The current time will be displayed in the special field.

4.1.3 Creating a formula

- Select the node "Formula Fields" in the Field Browser.
- Click on the New button  in the Field Browser (note: not to be confused with the New Report button  in the toolbar).
- Enter the name of the formula in the field "Formula Name", e.g. "First Try".
- Enter a formula, e.g., "My First Formula" (with the quotes) in the text area of the formula editor and click OK.

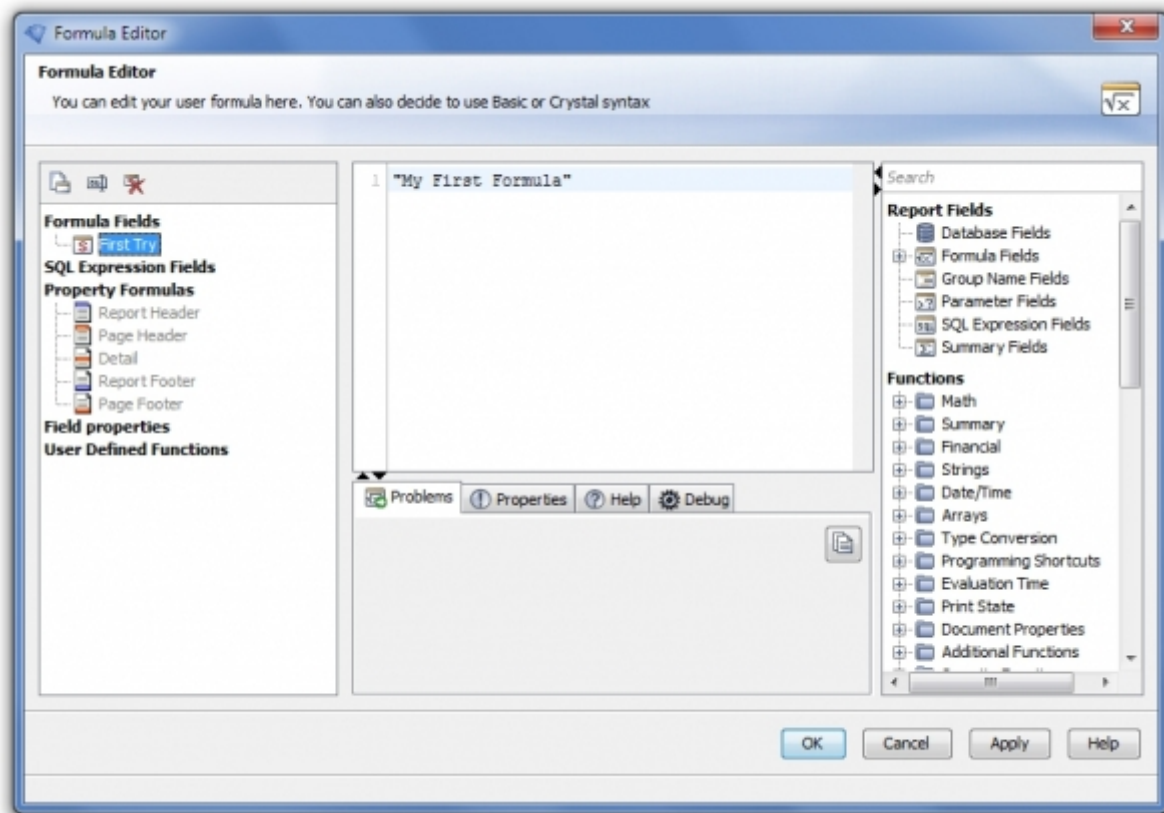


Figure 6: Formula Editor

- Expand the node "Formula Fields" in the Field Browser.
- Select your new formula and drag it to the position in the report window where you want to insert it, similar to dragging a Special Field into the report.

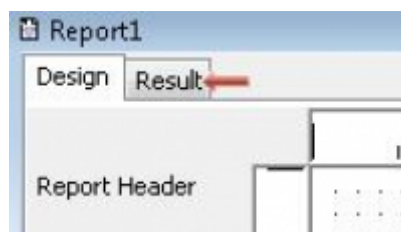


Figure 7: Report Tab

Now to see the report you have just created, click on the "Result" tab of the report window to see the result in the report viewer.

Congratulations! You should now see the created report in the Java report viewer:

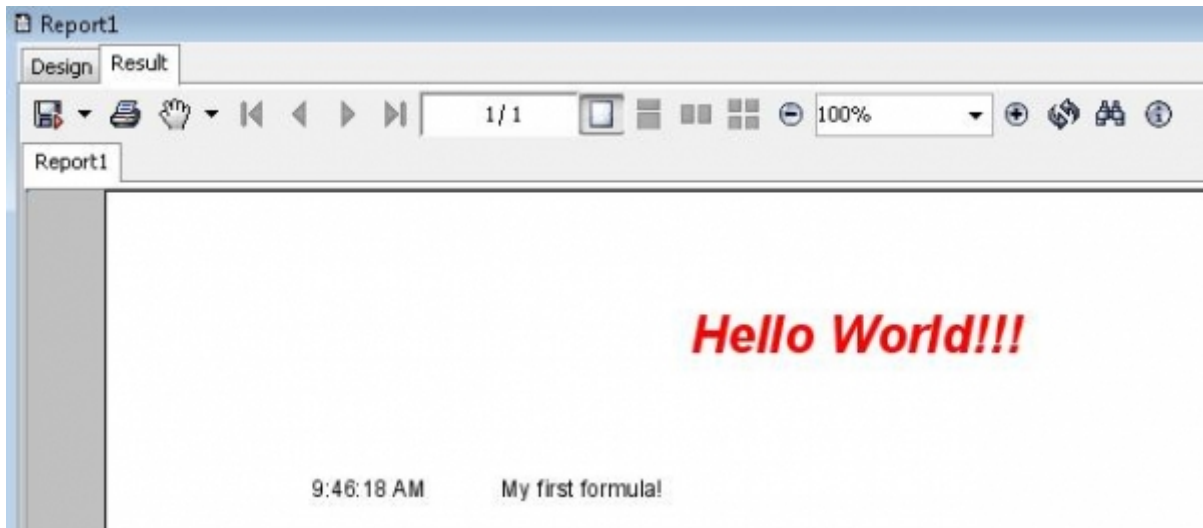


Figure 8: Report Preview

4.2 With database connection

We now will take it a step further, and create a report with an actual database connection. Once again, we start a new report by click the New button. After that the Report Wizard will open. We now select the layout type "Data Table" in the category "Summer Breeze" for our new report and click "OK".

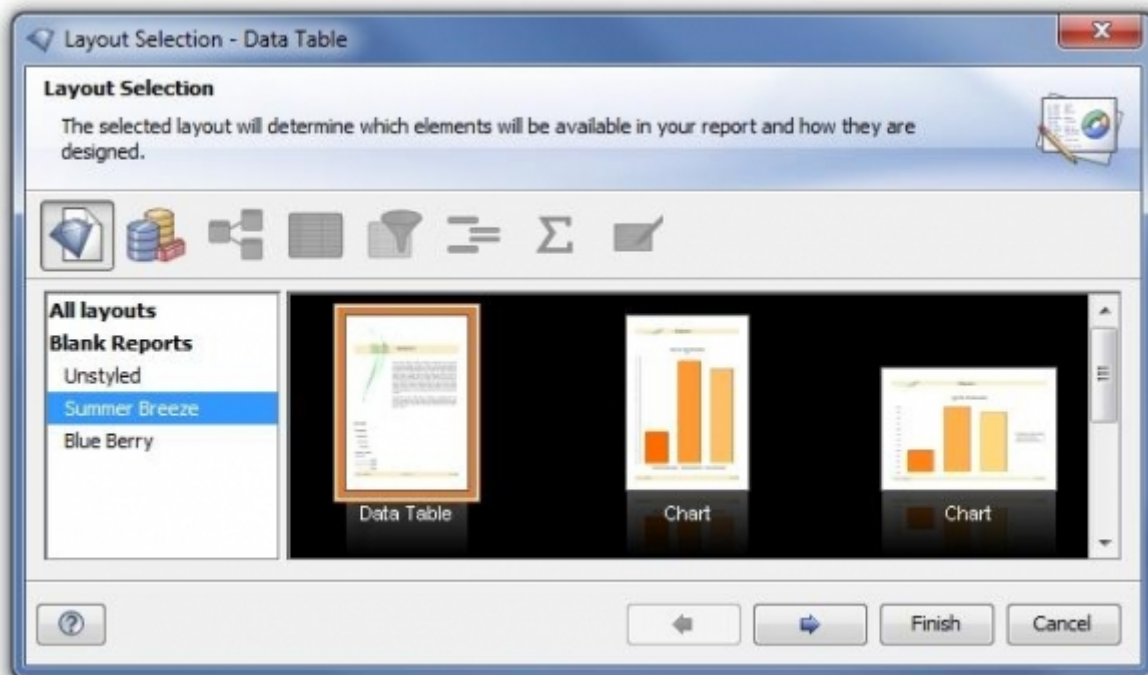


Figure 9: Report Type Selection

Now we select the data source, which contains the information about the database, like host name, user name, password and/or a schema.

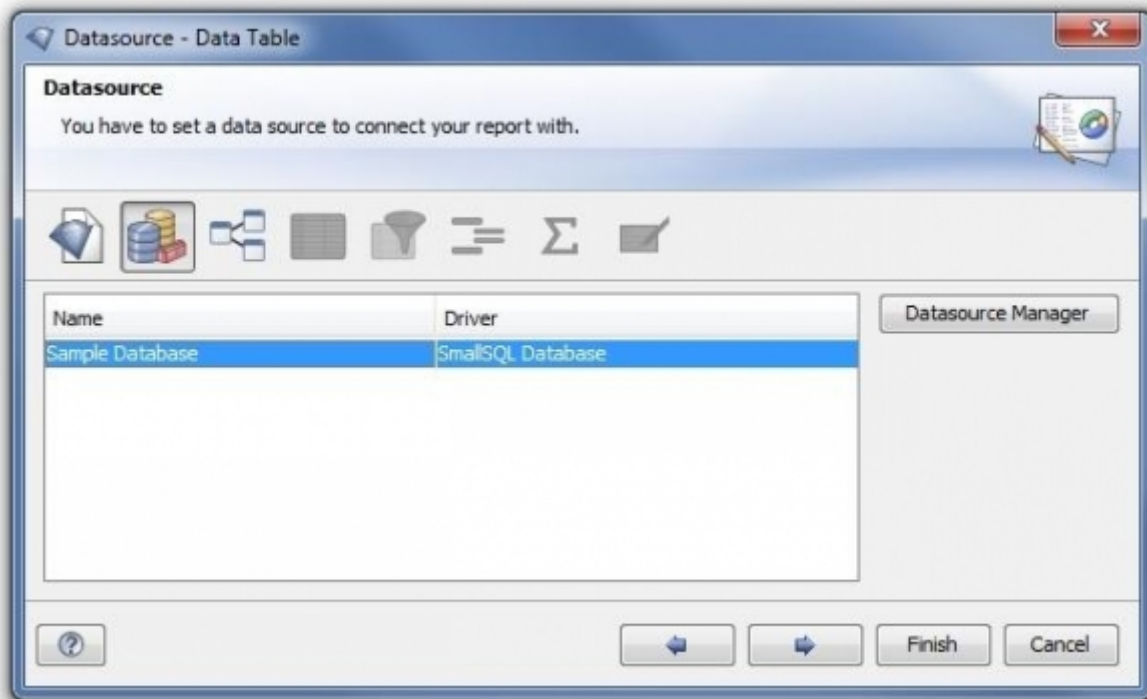


Figure 10: Data Source Selection

Once we click on the "Next" button, the Database Wizard will open. We will create only a very simple report based on the Sample Database – showing employees and the orders they have processed. To do this, we simply open the tree on the left and choose the two relevant tables for us by dragging them into the design area on the right – "Employees" and "Orders". We now join them by dragging the column "EmployeeID" from one table onto the other table's column of the same name. This creates an "equal join" between the two, meaning that these two tables are the source of our report data, and that only those rows are chosen in which Employees.EmployeeID is equal to Orders.EmployeeID.

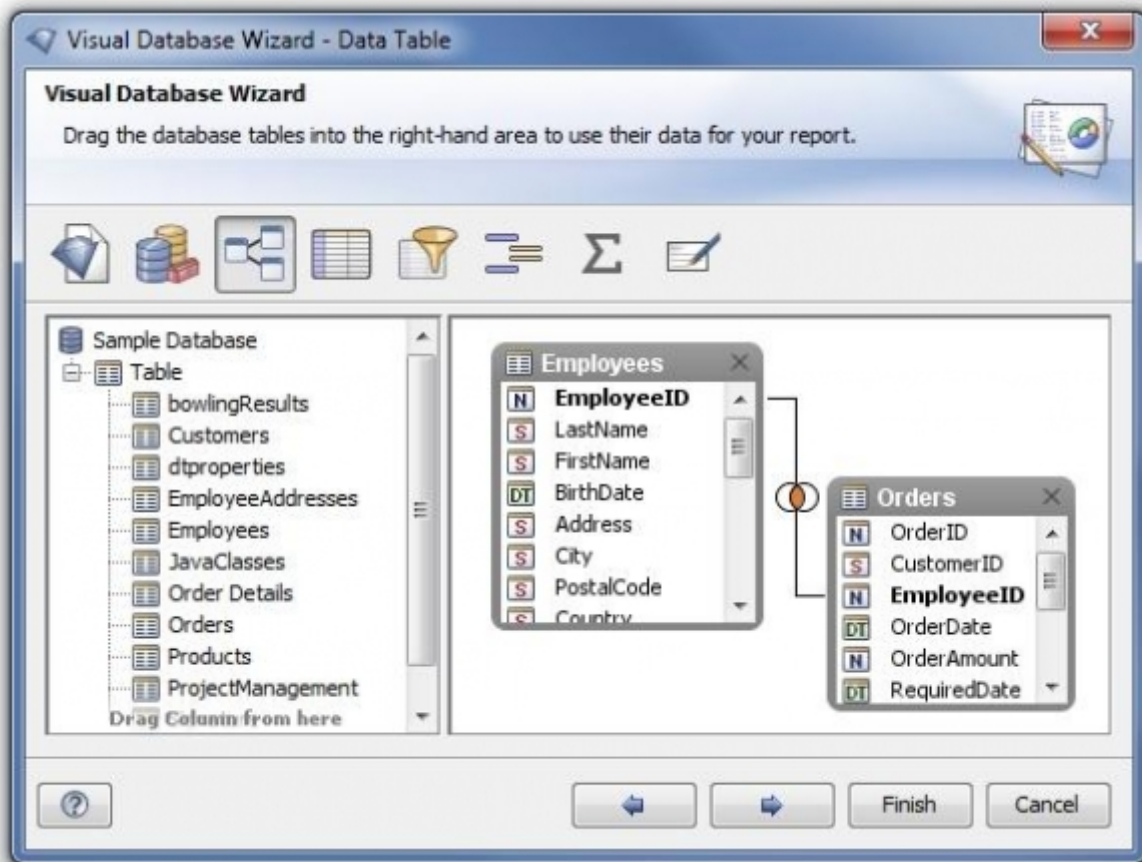


Figure 11: Table Selection

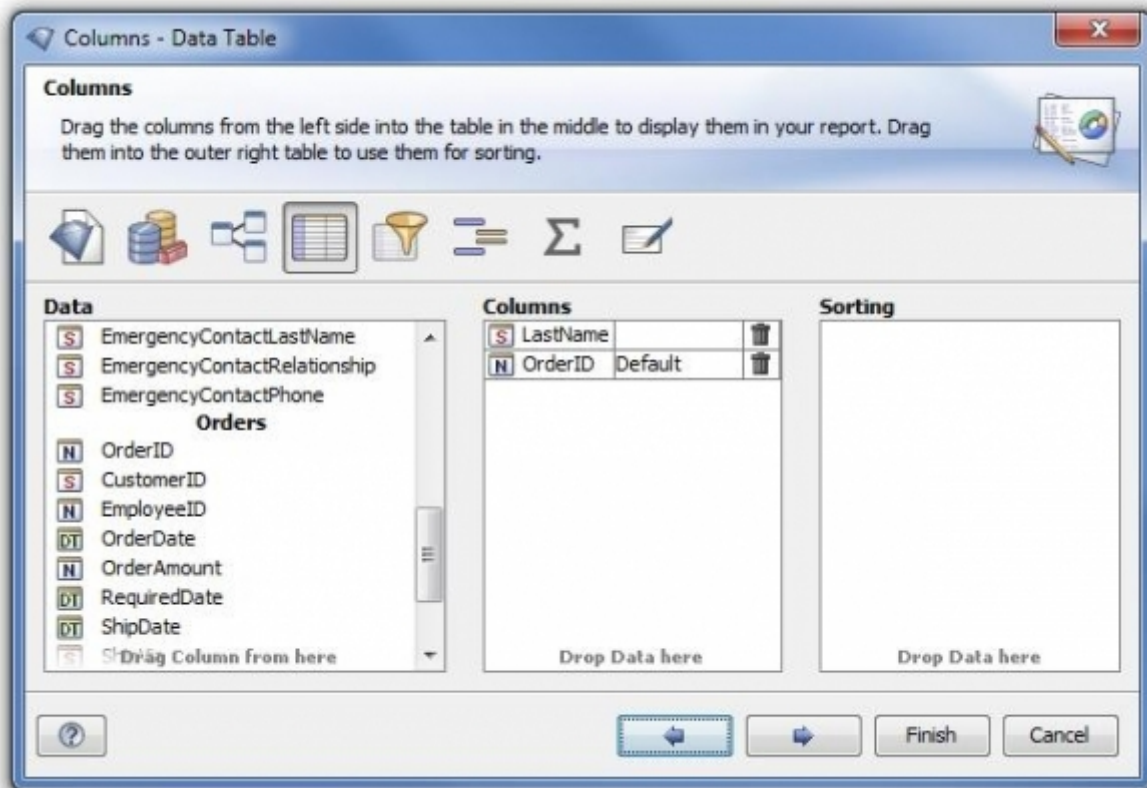


Figure 12: Database Fields Selection

We click on the "Next" button to open the category "Columns" dialog.

Here we add various database fields, basically the columns of the result set of our choice, to the report. For each row, a detail section is created and displayed with the corresponding record. For example, we place two fields, Employees.LastName and Orders.OrderID, into the report and then we click on "Finish" to close the Report Wizard.

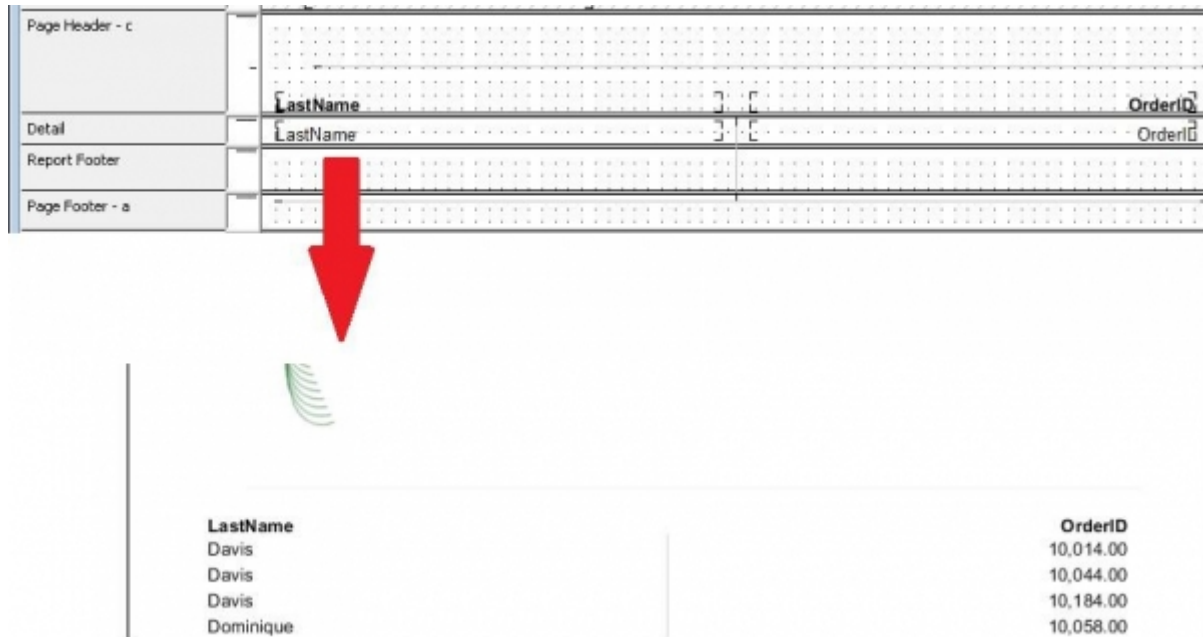


Figure 13: Report Design and Preview

The database fields will be displayed in the detail section, once we click on "Result", our report will render the detail section for each record in which the employee's ID is equal to the employee ID of the order.

This concludes the steps for creating our first report with a database connection. There are many more possibilities – we could reference database fields in our formulas, create summary fields, groups, and many other things. Many of these are documented in our various guides, available for free on our web site.

5 FAQ and Troubleshooting

5.1 How do I specify the JDBC driver I am using to connect to my database?

First, add the jar file of the driver to the class path. There are 3 possibilities to do this:

- Copy the driver jar file (e.g. Sprinta.jar) in the "lib" directory that is located in the directory of the i-net Designer, e.g.: "C:/Program Files/i-net Designer/lib" and then start the report designer.
- Start up i-net Designer with the driver in the classpath, like so: `javaw -classpath .;mysql-connector.jar -jar Designer.jar`
- Specify the driver library path in the property "library" of the Data Source Configuration, so the driver can be loaded dynamically.

5.2 I am getting the error "Configuration was not found", what am I doing wrong?

This means i-net Clear Reports can not find the configuration it is supposed to use (which includes the license key as well as a variety of important server settings).

In order to see which configurations you have on your system, simply start the StandaloneConfigurationManager (StandaloneConfiguration.exe on Windows, StandaloneConfiguration.sh on Linux). From within the manager you can edit, add, delete, and rename configurations.

By default, i-net Clear Reports looks for a configuration called "Default", first in the User scope, then in the System scope. If you wish to customize this, you can also provide the system property "clearreports.config", using the syntax "<SCOPE>/<configName>", e.g. using the command line argument "-

Dclearreports.config=USER/myconfig". If none of these configurations can be found, you will receive the above error.

5.3 I set the license key for i-net Clear Reports, but it is still saying no license key could be found. What is the problem?

Most likely you either do not have a configuration set (see the previous point), or the configuration which is being used is a different one from the one where you set the license key.

To see which configuration is actually being used, the easiest way is to check the log of i-net Clear Reports (either in the Java console, or in the log file you specified). Otherwise, see chapter "[I am getting the error "Configuration was not found", what am I doing wrong?"](#)" for further information on how to start the Configuration Manager and to see which configuration is loaded by default.

5.4 I used to automatically change the crystalclear.properties files for my various installations, now what do I do to automatically change my i-net Clear Reports configurations?

It is not only possible to make automatic or programmatic changes to i-net Clear Reports configuration, but the configuration changes can be done "on-the-fly" and the changes will be applied even to running i-net Clear Reports servers!

To do so, use the API of `com.inet.report.config.ConfigurationManager` and `com.inet.report.config.Configuration`, both located in the `ClearReports.jar`. See the API documentation to these classes for detailed information. To get started, here is a simple code sample for retrieving a configuration and changing its properties:



```
ConfigurationManager manager = ConfigurationManager.getInstance();  
Configuration c = manager.get(Configuration.SCOPE_USER, "myconfig");  
c.put("propertyXY", "myvalue");
```

5.5 I have another question not answered within this guide, where can I find answers?

See chapter "[Further Resources](#)" - for an answer to this question.

6 Further Resources

At most places within i-net Designer, pressing F1 will bring up the online help document. You can get it also with the menu item "Help". The online help is searchable, has an index and a table of contents. This should explain the answers to many of the questions you might have.

Additionally, there is an extensive FAQ on our web site, located at:
<http://www.inetsoftware.de/documentation/clear-reports/online-help/support/faq/index>

Also, there are various guides located on our web site which are similar to this one, on different topics such as the "Database Wizard" or "Grouping and Sorting".

If you should still have questions or problems not answered or solved in these resources, you can send an email to the i-net Designer support team at designer@inetsoftware.de.