



i-net
Clear Reports
2011

Repository

Administration and Usage

Table of Contents

1 Introduction	2
2 Configuration	4
2.1 Hard Disk Repository	6
2.2 Database Repository	6
2.3 User Directories	7
2.3.1 Where are user directories available?	7
2.3.2 Where and how can i configure the user directories?	8
2.3.3 Default user rights	8
2.3.4 What are the restrictions regarding report permissions?	9
3 Security Issues	10
3.1 System Permissions	10
3.2 Report Permissions	11
3.2.1 Displaying the permissions	12
3.2.2 Simulated Folder Permissions	12
4 Accessing the Repository	14
4.1 Remote Interface	15
4.2 i-net Designer	15
4.2.1 Examples	16
4.3 WebDAV support	17
4.3.1 Connecting to your Repository using Windows	17
4.3.2 Connecting to your Repository using Linux (GNOME)	17
4.3.3 Connecting to your Repository using OSX	18

1 Introduction

i-net Clear Reports is widely used as a central point of report generation throughout companies. Report designers need to have direct access to the servers' report file locations to create new reports or modify existing ones. Administrators have to set up scheduling tasks or distribute URLs to the resulting reports for the recipients. In addition, they have to make sure that security measures are taken to separate certain groups from each other or make sure that they do not accidentally modify their co-workers' report template files.

Since those approaches are difficult to handle manually, and a lot technical skills are required by each affected party - report designer, system administrators and report file recipients - we have come up with a convenient and easy-to-use solution that takes everyone's requirements into account.

The Repository is a unified report template file store that can be accessed in many ways. Designers will only need the i-net Designer to create, access and modify their report template files - without any network shared file systems. This enables report modification from virtually any location with a network connection to the report server.

Administrators will not have to provide network file shares to the report locations (e.g. smb, nfs or afp) - just one URL to the report servers' repository.

Report recipients can still receive their reports on a regular base using the scheduler. But in addition they will not need a specialized link list to their reports for calling them directly. They can just open the Repository Browser in the Remote Interface or i-net Designer and render or export the report files from there. One URL beats the many.

Note that the name "Repository" might remind you of code repositories such as CVS, SVN, or Git. Unlike code repositories, however, at this point, the Report Repository does not offer versioning of report files.

The Report Repository is simply a unified store where users can put and access all their report files with just one URL, suffixed by their report's file name.

2 Configuration

Activating the Remote Repository Browser can easily be done by using the Configuration Manager - locally or via Remote Interface. The options can be found in the category "[Plus Features](#)".

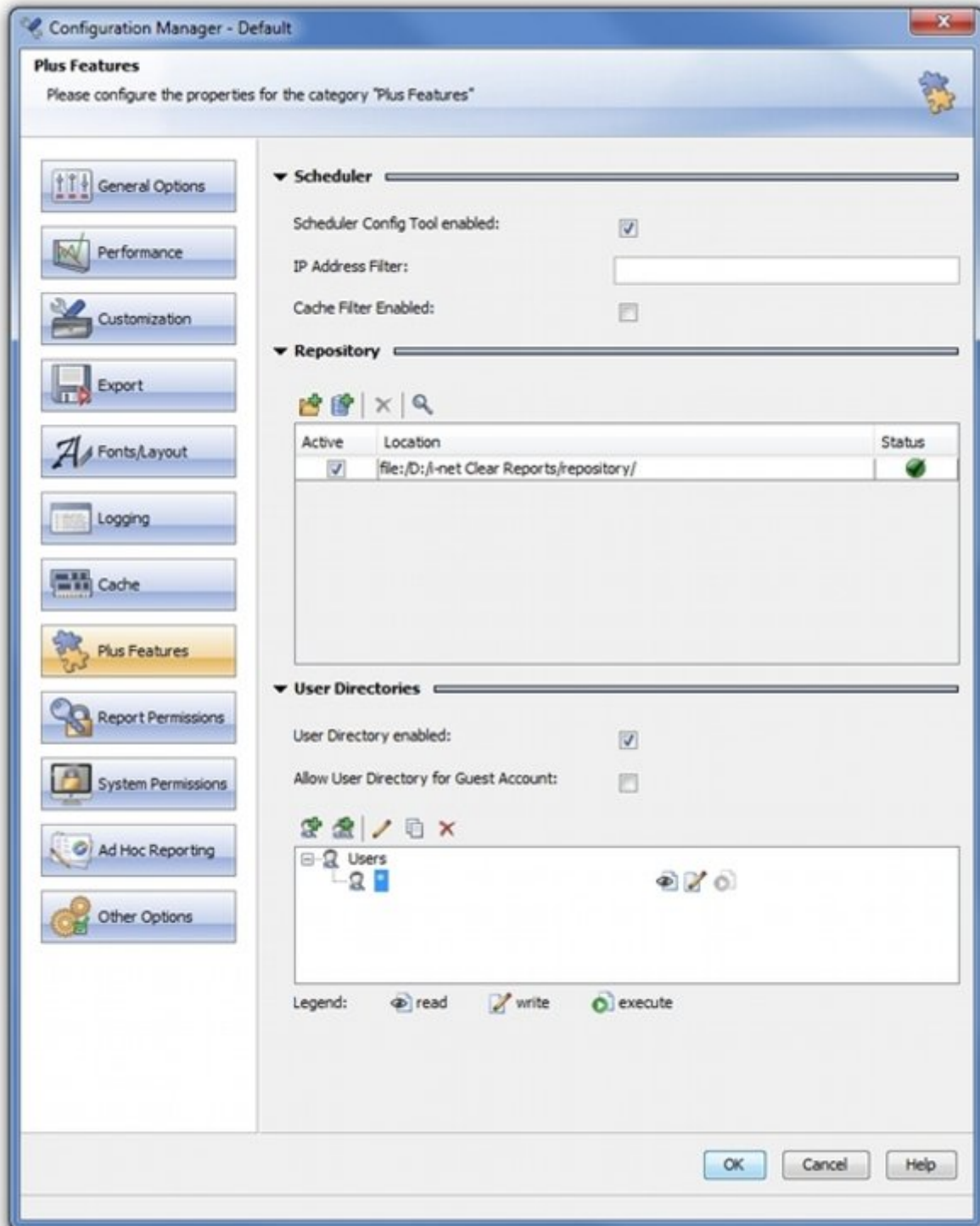


Fig. 1: Administration of the Repository

The Report Repository currently supports two types as report store: hard disk and database. You can add multiple repositories to your configuration,


but only one can be active at a time. To manage the different repositories you'll find a list of the already defined locations in a list.

The list consists of:

- a check box to select the current repository (only one can be active at a time)
- the selected location on your hard disk
- a status icon with detailed information in the tool tip (see below)

Important: Please note, that the repository does not offer any version control or backup mechanism. To avoid accidental loss of data such as your report templates we encourage you to use third-party programs.

2.1 Hard Disk Repository

To add a hard disk repository simply click the  icon in the toolbar. Select the desired folder in the following dialog.

Your selected folder will be added to the entry list below the toolbar. The status icon on the right has the following modes:

- Gray for an unchecked or otherwise unknown state
- Red for unavailable
- Yellow for existing, but not accessible
- Green for valid location

2.2 Database Repository

Instead of a hard disk based repository you can also use a database - depending on your desired environment. To add a new repository click the icon and fill in the required information into the dialog.

You have to specify a JDBC URL including your database, the username and

password for the database and the name of the driver class. To ease the settings there is a template selector for drivers that can be installed together with i-net Clear Reports during setup.

The system will create the needed structure in your database once the connection can be opened successfully.

Alike the hard disk settings, there is a status icon on the right for the following states:

- Gray for an unchecked or otherwise unknown state
- Red for any error that occur during connection time - the exact error message can be obtained by hovering the icon
- Green if the connection can be established

2.3 User Directories

A user directory is a location in the report repository where each user can save it's own reports. Ad hoc reporting also uses these user directories to store the ad hoc reports of the user instead of central storage location.

2.3.1 Where are user directories available?

The node "My Reports" is available in the repository browser, in the dialog "Open Report File" dialog of the i-net Designer and user directories are available using WebDAV. A user who has the right for the configuration manager (see category: System Permissions), can see the additional node "All Users" that contains the user directories of all users.

The user directory is just a link to the directory: "<repository directory>/users/<domain>/<username>". If a user logs on for the first time, then a directory is created for him in "<repository directory>/users". If the

user name contains a domain name, then a subdirectory for the domain will be created, if it does not exist already.

2.3.2 Where and how can I configure the user directories?

You can enable and configure the user directories in the category "Plus Features" of the configuration manager. In this category it is possible to configure the user's rights to his user directory.

If a user has all rights, then he can read, write and execute reports in his user directory. Any user who is not defined in the section "User Directories", has no rights to his user directory.

If the asterisk symbol (*) is used as name for user or role, then the permissions configured for this user or role are valid for all users or roles. Also the permissions are additive, which means that a right is granted to the current user or role if it is granted to the current user or role itself, or to user "*" (all users), or to a special group, where current user belongs to.

The configured rights for the user directories are only used, if the check of the "Access Permissions" is enabled in the category "Report Permissions".

To see the user directory "My Reports" in the repository browser, the user must have the right to use the repository browser (see category "System Permissions"). You can find more information about permissions in the Security Guide.

2.3.3 Default user rights

By default, only read and write is allowed for all users. Each logged in user can open and save reports in the user directory but he can not execute it by default. This is done to protect the server from extremely long-running reports. Therefore, it is necessary to activate the right to execute reports

manually. You should not give it to all (*) users, but to users who need it.

2.3.4 What are the restrictions regarding report permissions?

If user directories are enabled, the permissions set in the section "User Directories" are used for this directory instead of the configured "Access Permissions".

3 Security Issues

The Remote Repository seamlessly integrates into the security measures of i-net Clear Reports. To unlock the full potential of the Repository to individual users you should provide the system with a valid login type, e.g. Windows authentication (for more information see the [Security Guide](#)).

3.1 System Permissions

With active System Permissions you can decide which users can access the Repository. The flag for "Repository Browser" enables the user to use the Repository feature in the Remote Interface. The flag "Remote Designer incl. WebDav" in the tab "Interfaces" enables the user to use the WebDAV interface and the possibility to access the Repository from the i-net Designer.

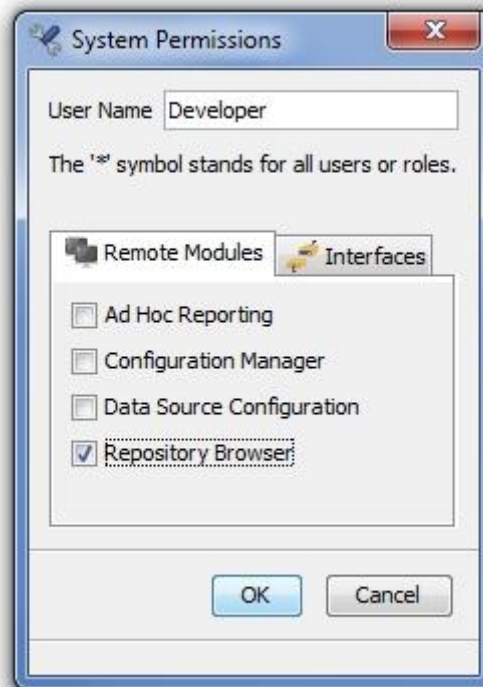


Fig. 2: Add System Permissions for User

3.2 Report Permissions

The Report Permissions from the [Security Guide](#) fully apply to the report files in the repository, meaning you can provide individual read, write and execute permissions for your reports.

Privileged users can edit the report permissions directly in the Repository Browser of the Remote Interface. For more information about i-net Clear Reports security, have a look at the [Security Guide](#).

The permission button will be enabled if Report Permissions are enabled and one of the following conditions apply:

- The user is System Administrator (if the login type 'Master Password' is activated in the configuration or the selected authentication mechanism is not available).
- The user has the right to access the Remote Configuration Manager and is allowed to change files in the selected folder.



Fig. 3: Permissions in Repository Browser

3.2.1 Displaying the permissions

Users can see their permissions in the report file table of the Repository Browser or the properties panel of a report file. There are three distinct rights to limit the access:

- "r" - report file is readable, meaning the user can see and download it
- "w" - report file is writable, meaning it can be altered, renamed, moved and deleted
- "x" - report file is executable, meaning the current user can run and export the report

The user rights are being displayed color-coded depending on where the right has been set: global or in the folder.

- Blue: The right has been defined in the global configuration of the i-net Clear Reports server (Report Permissions tab in the Configuration Manager)
- Green: The right comes from a reportPermission.xml file in the current folder (privileged users can define them directly from the Repository Browser)

3.2.2 Simulated Folder Permissions

Since i-net Clear Reports does not directly offer folder permissions - unlike UNIX or Windows file systems - the folder permission depends on the rights the user has for reports in this folder.

A folder is visible if there is at least one pattern defined which grants read access to a report file in this folder. There must not actually be a report in the folder yet - the possibility to read a report file fulfills the condition.

To upload reports or create sub-folders, rename or move folders in the Repository, there has to be at least one pattern defined which grants write access to a report file in this folder. There must not actually be a report in

the folder yet - the possibility to write a report file fulfills the condition.

4 Accessing the Repository

The Repository offers several different access methods depending on the scenario.

The Remote Interface, which comes with the server installation, has an embedded graphical Repository Browser. The browser can be used for all management purposes.

The i-net Designer offers the file chooser, a convenient way for report designers to access reports from within the program using a version of the Repository Browser which is less powerful in terms of managing the repository. The main purpose is to open, modify and save report files from the repository and render them directly on the server. The report can use the report servers embeddable fonts for local modifications.

In addition i-net Clear Reports runs a WebDAV interface that allows file system access to the repository. This enables users to interact with the repository like they do with network shares. (See below for detailed information on how to connect to a repository from your operating system.)

For direct access to the renderer of i-net Clear Reports you can use the newly created "repo" URL protocol. It is an addition to the current [<http://www.inetsoftware.de/documentation/clear-reports/online-help/features/report-url-parameters>|report URL parameter "report"] that allows a shorter way to call the report renderer:

- Current Format:

```
http://reportserver.com/reporting?report=file:C:/repository_files/  
path/to/report_name.rpt
```

- Repo URL Format:

```
http://reportserver.com/reporting?report=repo:/path/to/  
report_name.rpt
```

4.1 Remote Interface

Access URL:

```
http://<yourserver:port>/<context>/remote/repositorybrowser
```

The Remote Interface offers a fully featured GUI for the Report Repository. It is file browser like, having a directory tree and a list of the report files. Using the interface you can manage every aspect of the repository, which includes:

- adding and removing files or directories
- tagging of reports
- setting file permissions
- and of course rendering and exporting report files

4.2 i-net Designer

Access URL:

```
http://<yourserver>:<port>/<context>/repository
```

The i-net Designer comes with a file chooser that has a built-in browser for the Repository. It is almost as feature rich as the Repository Browser GUI in the Remote Interface - but you can directly open, edit, save and render the reports from the designer program. Additionally the opened reports will be added to your recent document list to make them available for quick starts.

You can distinguish reports that have been opened locally or from the report

repository by their render tab which has an additional "Remote" flag for Repository reports.

To connect to your repository you have to insert the access URL in the configuration dialog that you can access with the menu item: "Options | Repository Server". Specify the login credentials if necessary.

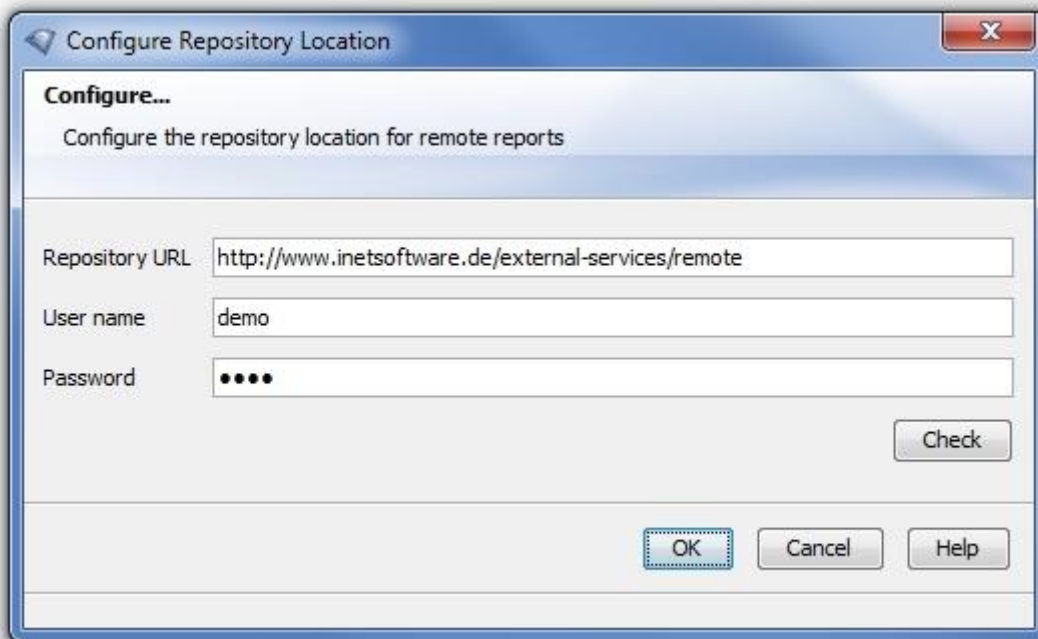


Fig. 4: Repository Configuration in i-net Designer

4.2.1 Examples

- i-net Clear Reports as local standalone server

<http://localhost:9000/repository>

- i-net Clear Reports in Tomcat in local intranet

<http://tomcat-server:8080/reporting/repository>

- i-net software sample repository

```
http://www.inetsoftware.de/external-services/remote/public/  
repository
```

4.3 WebDAV support

Access URL:

```
http://<yourserver:port>/<context>/repository
```

The Repository supports the WebDAV connection standard. You can type in the above mentioned URL in your browser and will get the browse able and download able repository content. But you can also use the above URL to add a network storage to your operating system file browser.

4.3.1 Connecting to your Repository using Windows

- **On Windows Vista:** In the Windows Explorer right click on the computer icon and select "Add Network Location".
- **On Windows XP and Windows Server 2003:** Open "My Network Places" from the desktop and click on "Add a Network Place".

In the field "Internet or network address" specify the access URL of your WebDAV interface (see above for examples).

4.3.2 Connecting to your Repository using Linux (GNOME)

- Go to Places → Connect to Server
- Select Service Type → WebDAV (HTTP)
- Insert the name and port of the i-net Clear Reports server
- Insert "/<context>/repository" as Folder

The login credentials need not be provided here. The server will ask for them

if necessary.

4.3.3 Connecting to your Repository using OSX

In the Finder press "CMD+K" to open up the server connection dialog. Enter the access URL from above and click "Connect". The Finder will now attempt to establish the WebDAV connection - and maybe ask for your authentication credentials (which can be saved to your keychain).

The established connection will be displayed as a remote network device.